

PINNACLE

9
SADASHIV



The Hallmark of Exclusivity!







A Masterpiece was Envisioned

What started with the dream and vision of a born-leader, Mr. Gajendra Pawar, is today a synonym for unmatched quality and impeccable projects in real estate. Pinnacle, as the name indicates, has reached incredible heights of success through years of passionate work!

This legacy, of rendering signature landmarks to several charming locales of Pune, is yet again realised with 9 Sadashiv! A work of passion, it portrays our zeal for innovation & excellence.



PINNACLE

9

SADASHIV





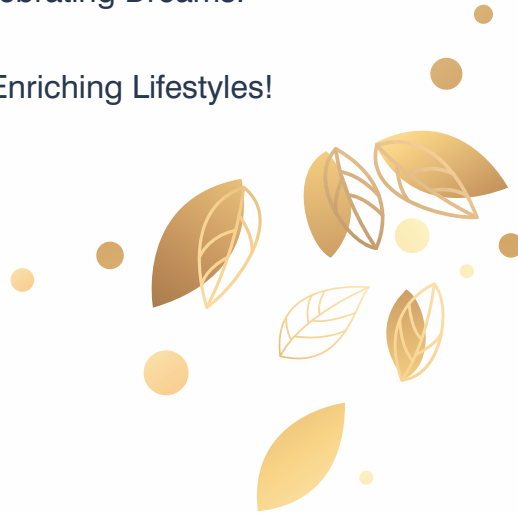
Augmenting Our Legacy.

Shaping an Extraordinary Vision.

Introducing Exclusive Luxury.

Celebrating Dreams.

And Enriching Lifestyles!







The Hallmark of Exclusivity!

Artistic designs, elegantly-crafted spaces and seamless integration of all possible comforts - we wish not just to build edifices, but to curate unforgettable experiences!

A confluence of style & refined sensibility, 9 Sadashiv is an unrivaled offering of pleasing spaciousness and premium features. It is designed to offer the epitome of success & a graceful lifestyle. The quintessential convenience & warmth of an age-old admired locale - Sadashiv Peth, is now enhanced with a 'never before' glamour quotient! It is an exclusive address for your discerning tastes.





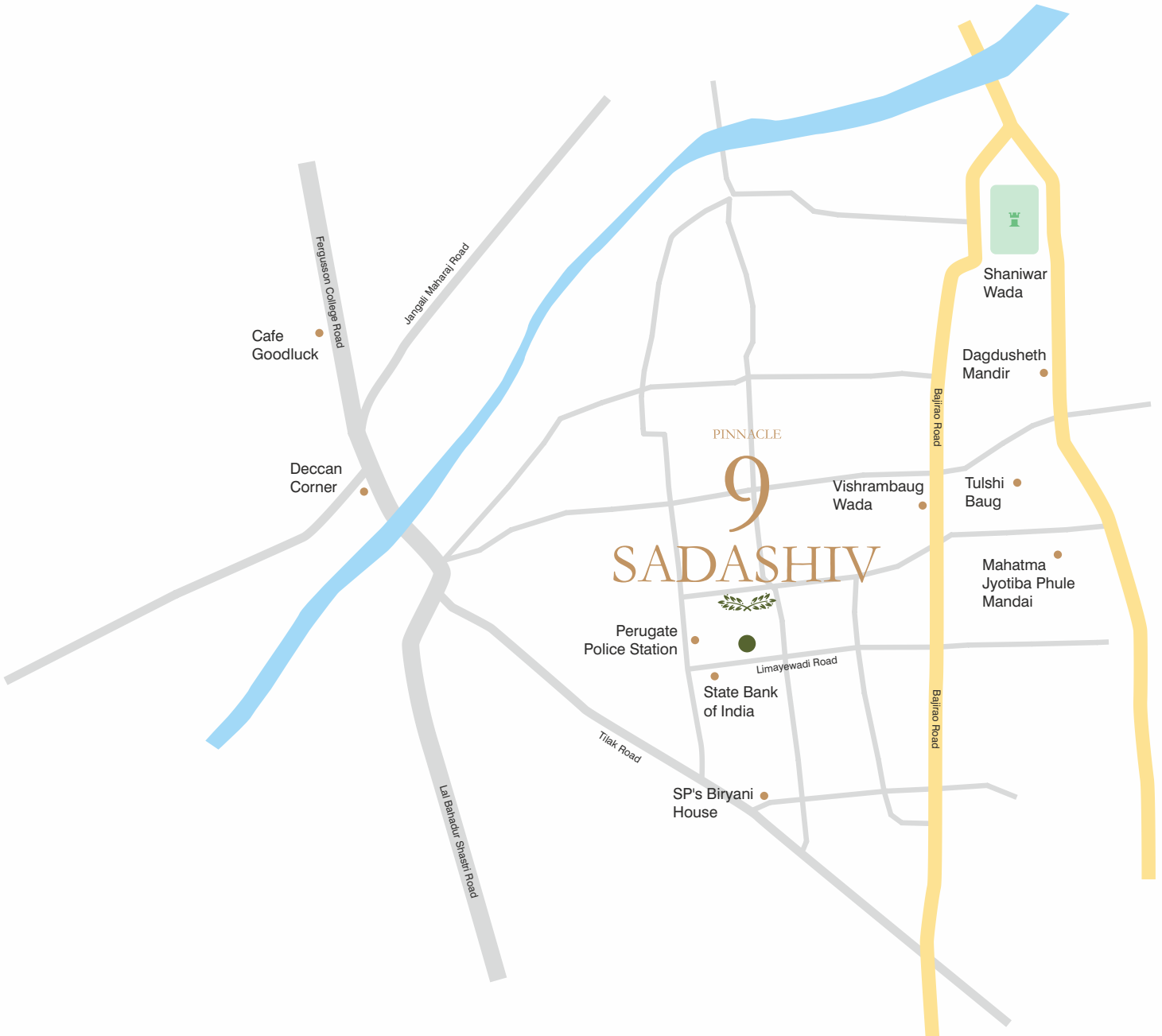
The Revered Charm of Sadashiv Peth!

Nestled beautifully in the heart of Pune, Sadashiv Peth is an incredible strategic location not just for eminent living, but also for exclusive brand presence & growth opportunities. The locale exudes a charm treasured by many, for generations.

Along its winding streets lives heritage and a unique culture - simple, beautiful, insightful, traditional, yet modern. 9 Sadashiv introduces a contemporary flair to this historic jewel! The cultural beauty of Sadashiv Peth is complemented by a unique functionality. Amidst the intricate roads of this locale lie some of the best shopping destinations, conveniences, business hubs and indulgences of Pune.



LOCATION MAP



THIS MAP IS ONLY FOR REPRESENTATION PURPOSES AND IS NOT TO SCALE.



Coveted, in every way!

Centrally located to bring you close to
all possible localities of Pune

Enjoys easy connectivity via
public commutations & private travel


One of the finest heritage heralds of Pune

Close to premium schools, colleges, hospitals,
temples, movie theatres, food junctions and more

In the vicinity of Pune's finest
commercial edifices & IT hubs

Easy accessibility to locales like Kothrud,
Fergusson College Road, Prabhat Road,
Sinhagad Road & more

Close to green pastures of several gardens
& intra-city hill treks





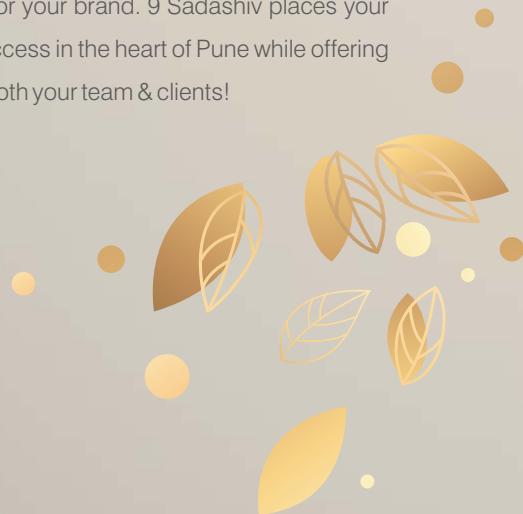


OFFICE SPACES

Rethink Work Culture, Opulence & Inspiration!

A combination of opulent structure and an inspiring, happy environment, everything about the office spaces at 9 Sadashiv spells transcendent. Ingeniously designed for a lasting impact on your clients, it is where ideas are accentuated & dreams are realised. The workspaces are integrated with simple comforts of hassle-free parking, impressive amenities & exclusive, green settings amidst the bustles of the city.

With futuristic spaces & an address that augments growth, envision an affluent future for your brand. 9 Sadashiv places your business at the nexus of success in the heart of Pune while offering a grandiose experience to both your team & clients!








RETAIL SPACES & SHOWROOMS

**Add Convenience & Edge
to Your Growth Strategies!**

Sitting aspirationally in the embrace of premium residential locales and commercial labyrinths of Pune, 9 Sadashiv offers an exceptional advantage to your business. It's ideal dimensions are complemented with exceptional visibility and road frontage on three sides. The extremely well-connected & accessible retail spaces and elite showrooms at 9 Sadashiv render a superior edge to your growth strategies!



The spaces are meticulously designed with state-of-the-art amenities to redefine success. With boutique spaces, recreational features and magnificent architecture, it is a distinguished address for various business aspirations.



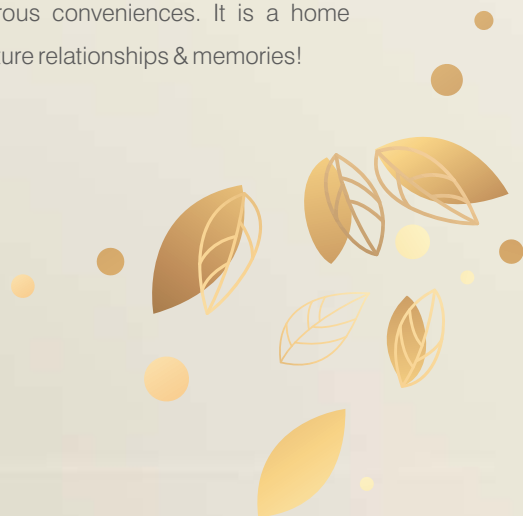


RESIDENTIAL SPACES

Shades of Luxury,
Peace & Joy!

In true Pinnacle tradition, 9 Sadashiv is an exclusive landmark offering unmatched abodes. The dynamic, designer residences have a distinct touch of glamour with thoughtful ornamentations such as soundproof windows, soothing ambience, ample natural light, flowing breeze and more. Every home is designed to be extravagantly aesthetic and impeccably functional. Tranquility, peace, joy and luxury comes effortlessly to you at 9 Sadashiv even amidst a highly energetic neighbourhood.

Your 2 & 3 bedroom residences are harmoniously blended with leisurely amenities and numerous conveniences. It is a home crafted with care and love to nurture relationships & memories!







LIFESTYLE & FESTIVE PROGRAMS

Flavourful Living!

We add a dash of flavour to all your celebrations and moments with our carefully planned feasts.

The harmonious tunes of Indian classical music welcomes you into the lobby, while fresh, beautiful Rangoli patterns greet you at your door-step everyday. A holy Basil or 'Tulsi' & Aloe Vera sapling in every home inspires health and wellness at 9 Sadashiv.

Every festivity and occasion here is made special with yearly joyous celebrations. We also organise several cultural and entertainment programmes exclusively for our residents throughout the year. Togetherness & community living is greatly treasured at 9 Sadashiv!








AMENITIES & PARKING

Invigorating Amenities & Conveniences!

The timelessly designed commercial & residential spaces at 9 Sadashiv are further augmented by the invigorating amenities. From a refreshing dip in the pool to a healthy routine at our well-equipped gymnasium, we take care of all your desires. The podium garden nestled in this architectural marvel, is a deliberate green statement, right in the heart of the city.

In addition to this are the seamless features and conveniences incorporated in our floor plans! A stately structure with spacious four floored parking and two car parks for each apartment means a whole new dimension of luxury in Sadashiv Peth. 9 Sadashiv is a glorious milestone in the rewarding quest of offering all possible comforts!

- Swimming Pool
- Gymnasium
- Podium garden
- Spacious 4-floored Parking







Artist's Impression



Specifications

Walls

150 mm thick walls with sand face plaster for exterior wall surfaces and gypsum coat for internal wall

Flooring

Vitrified tiles flooring in apartment
Vitrified / ceramic tiles dado in toilets up to lintel height
Vitrified / ceramic terraces and toilets

Doors

Main door - Veneered finish main door with SS fittings
Bed room doors - Engineered wood door frame & laminated finish flush doors with SS fittings
Granite frame for toilet doors & shutters with flush doors with SS fittings

Celling

Gypsum punning finish ceiling for all rooms

Kitchen

Polished granite kitchen platform furnished with single bowl SS sink
Electrical provision for essential kitchen appliances and exhaust fan
Dado tiles up to 3' height above kitchen platform
Electrical and plumbing provision in dry terrace for washing machine



Electricals

Branded and comprehensive electrical points in apartment

Painting

Semi acrylic emulsion paint for interior walls

Weather proof paint or texture on exterior surface

Windows

UPVC Windows with mosquito protective net on windows

MS Safety grill with enamel painting Granite sill for Windows

Bathrooms

Jaquar or equivalent for CP and hindware or equivalent for sanitary

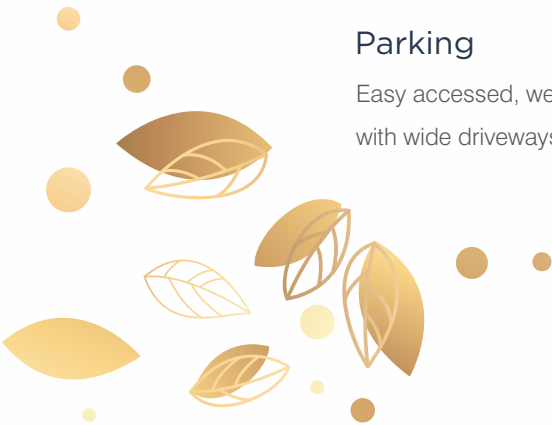
Electrical and plumbing provision for geyser in apartments toilets

Elevator

High Speed Automatic Elevators with Automatic Rescue Systems

Parking

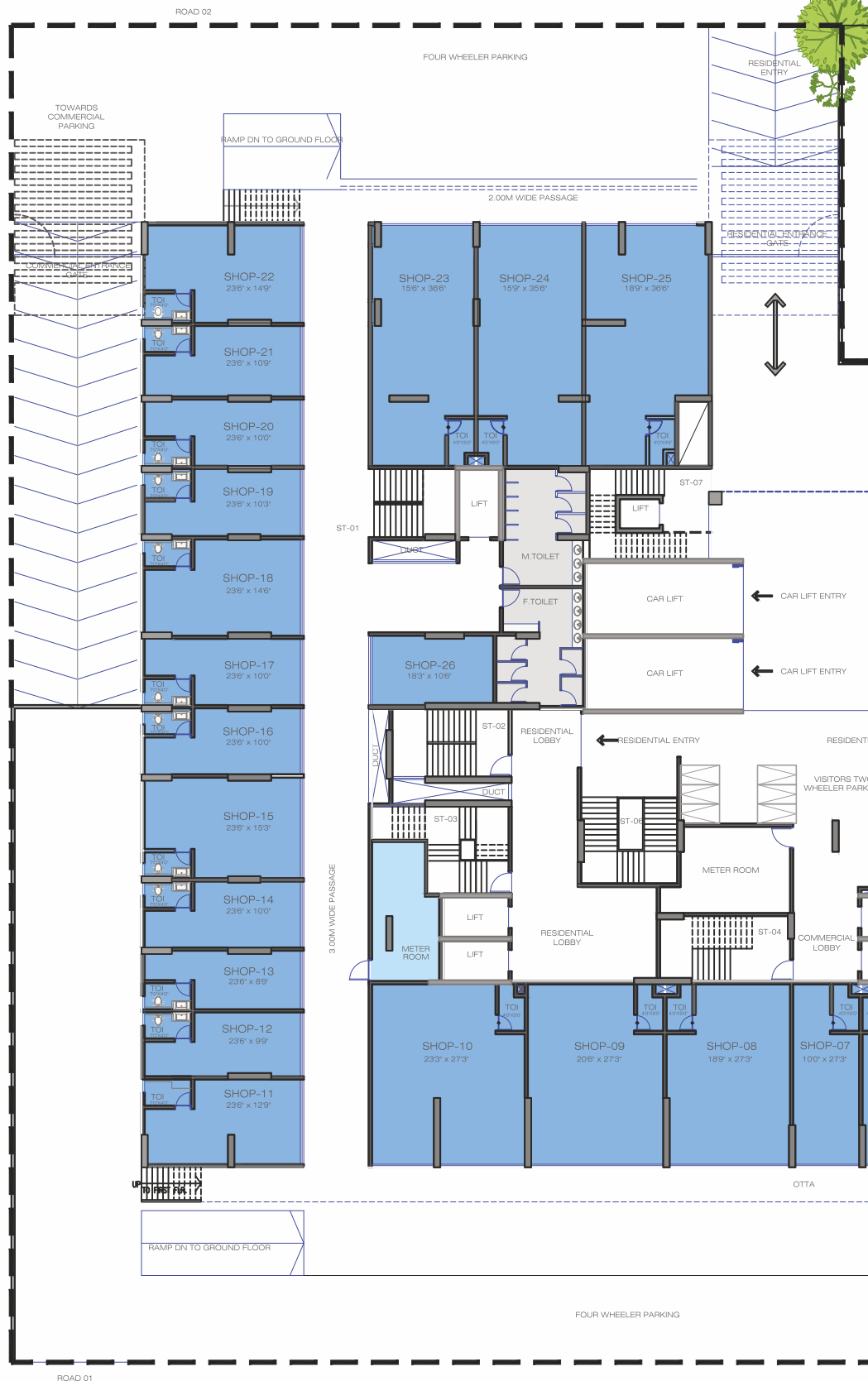
Easy accessed, well-lit and allotted mechanised parking bays
with wide driveways





BASEMENT FLOOR PLAN/ PARKING FLOOR

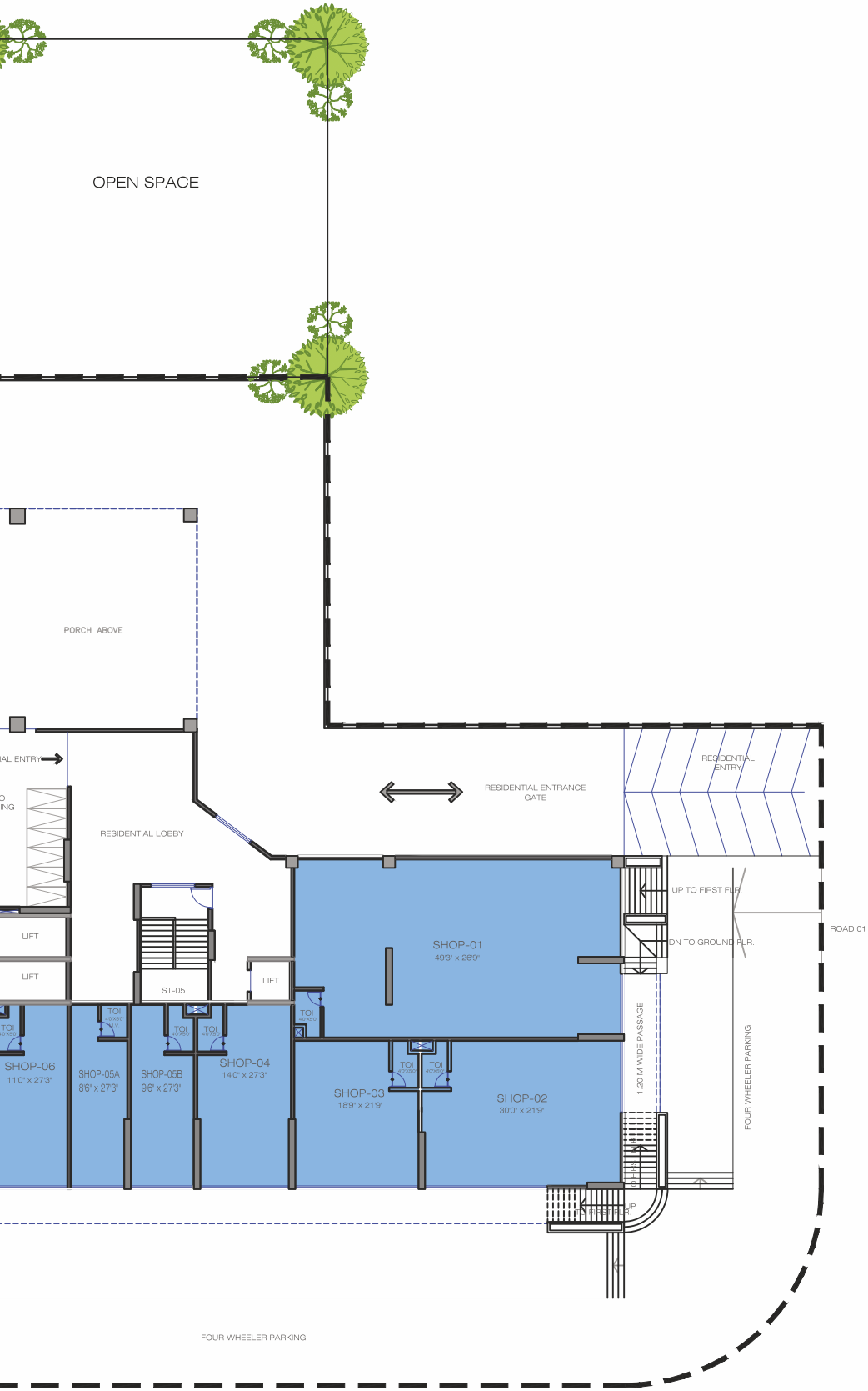




ROAD 01

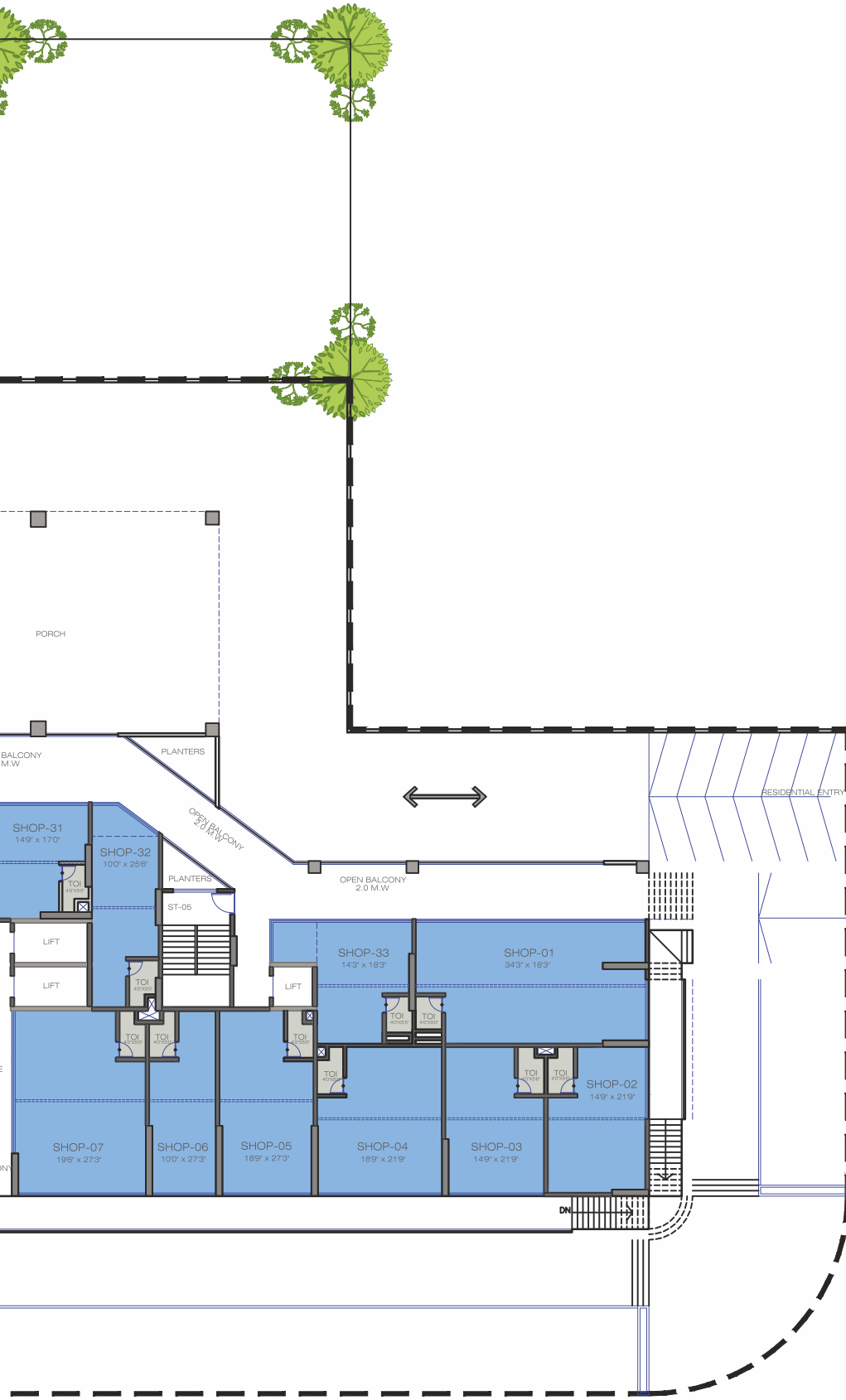
FOUR WHEELER PARKING

GROUND FLOOR PLAN





FIRST FLOOR PLAN





SECOND FLOOR PLAN



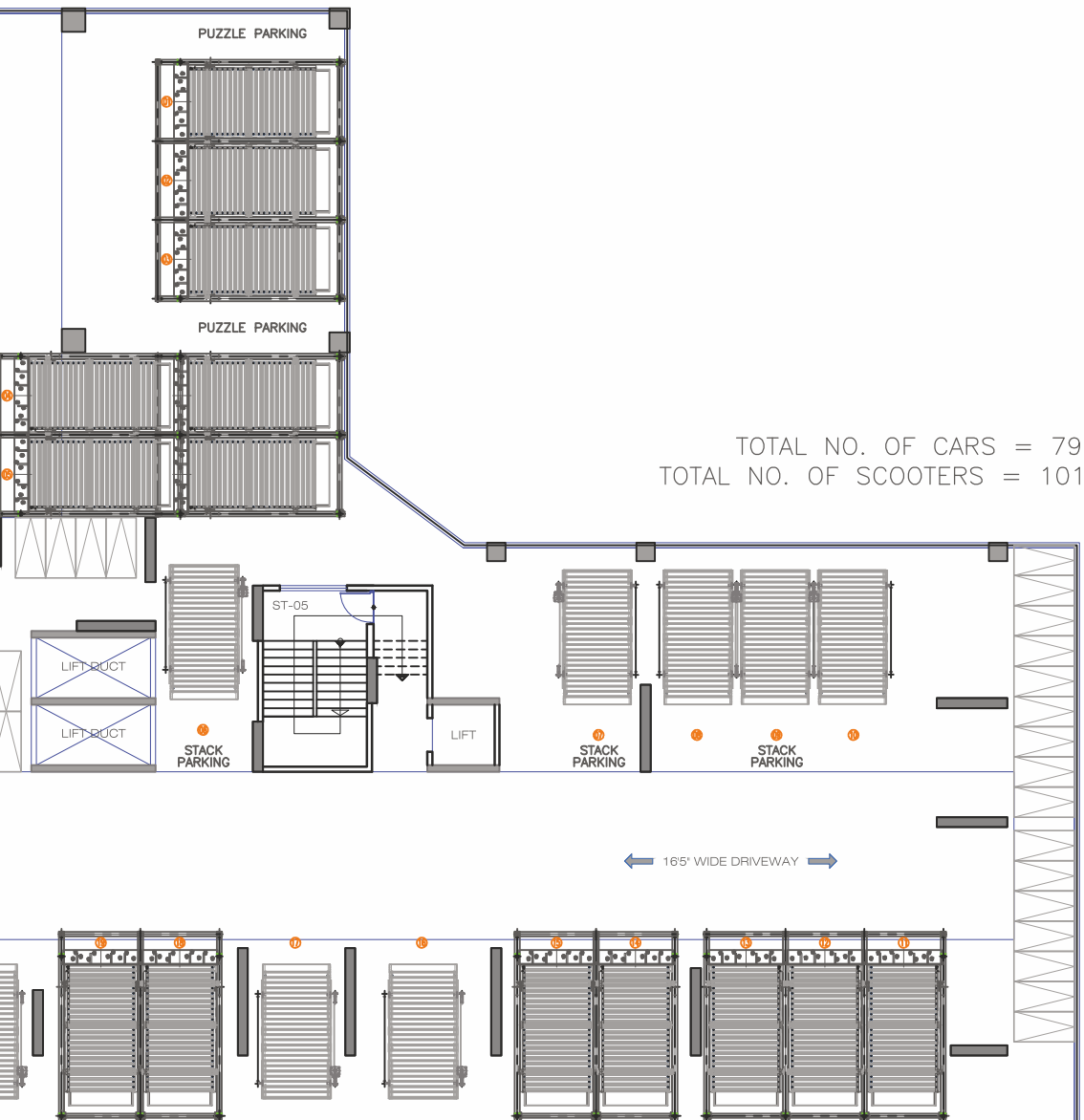


THIRD FLOOR PLAN





FOURTH FLOOR PLAN / PARKING FLOOR



TOTAL NO. OF CARS = 79
TOTAL NO. OF SCOOTERS = 101





Disclaimer: This perspective image may not be to the scale or may not represent actual facade / elevation. The details of windows, paints, elevation features, landscaping, ground development, trees etc. in this perspective is an artist's impression and would be different to actual construction of building and development. The viewers affirm that he / she has not taken his/ her decision of purchase/ booking by viewing this perspective. The company is not responsible for the action of the viewer's booking / purchasing a unit relying on this perspective.



The story of Pinnacle Group began with Mr. Gajendra Pawar's first endeavour - Pinnacle Garden - a restaurant located on a beautiful hilltop in Pune. From its artistic architecture and exotic ambience began a dream to curate passionate spaces that brought people together. This humble beginning was then turned into a monumental real estate brand - Pinnacle Group. Incepted in 1996, the brand has curated a rich, inspiring legacy of over 25 years and carved its niche in real estate. With over 30 projects, Pinnacle has today developed more than 30000 sq. ft. and rendered premium lifestyles to over 20000+ people. Scaling new heights of success with every project, they have today established a revered name in building elite residential & commercial spaces in Pune.

Head Office

884/9, Pinnacle House, Nal Stop, Erandwane, Pune 411004.

info@pinnaclegroup.in | www.pinnaclegroup.in

Member of





Site Address

1309, Sadashiv Peth Road, Near Bharat Natya Mandir,
Perugate, Sadashiv Peth, Pune, Maharashtra 411030

+91 20 66233 500 / 501

MahaRERA No: P52100008353 | www.maharera.mahaonline.gov.in

